



特别提醒：
 本图册为2016年第一次印刷，由于印刷原因，印刷的产品图片与实际产品颜色有所差别，须以实际产品为准；不可依据图片颜色订货。
 2016年10月29日

MCM

2016 MCM生态材料 校园饰面解决方案

ECOLOGICAL MATERIALS

SCHOOL PROJECT HIGHLIGHTS

广东福美集团
 PHOMI MCM CO.,LTD.

总部: 广东省广州市番禺区石壁钟盛路112号 P.C: 511495
 HQ: Phomi industrial Park, Chung Shing Road 112, Chung Village, Panyu District, Guangzhou 511495, P.R. China
 Service Hot Line : +86 4008-0303-08
 Tel : +86 20-84515088
 Fax : +86 20-34632196
 Http: //www.phomi.com E-mail:market@mcm.so



扫一扫，关注福美微信平台



扫一扫，访问PHOMI网站

本图册受知识产权保护，翻印必究。

PHOMI MCM 生态材料 校园饰面解决方案

广东福美集团



MCM

2016 MCM生态材料 校园饰面解决方案

ECOLOGICAL MATERIALS

SCHOOL PROJECT HIGHLIGHTS



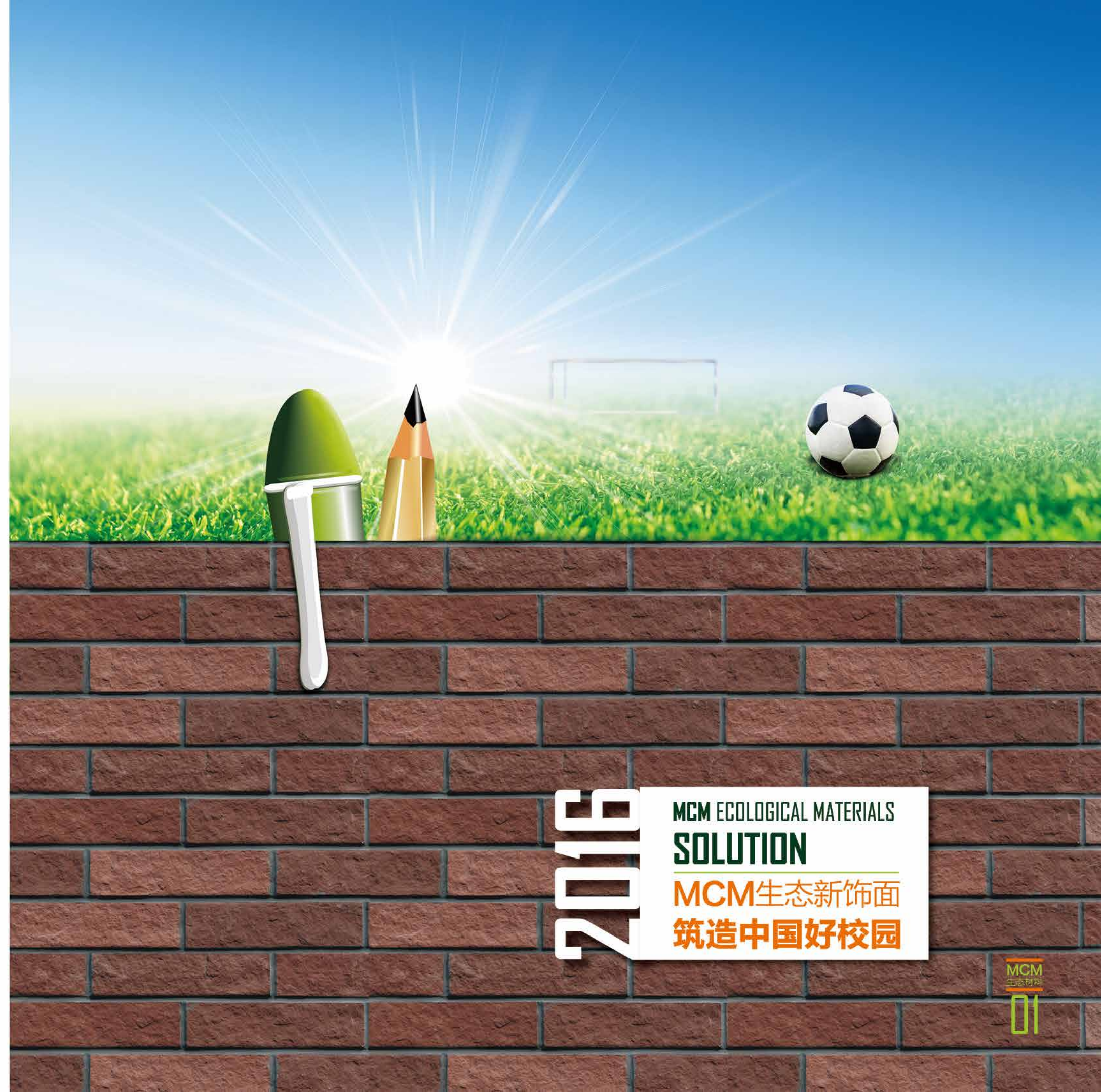
INTEGRATED SOLUTIONS

PHOMI MCM生态材料

致力于提供校园饰面生态解决方案

We provide integrated solution for building constructions in addition to being a product supplier.

PHOMI福美生态材料
Phomi MCM Eco-materials



2016

MCM ECOLOGICAL MATERIALS
SOLUTION

MCM生态新饰面
筑造中国好校园





传递当代校园风情 品鉴MCM装饰艺术

MCM—中国原创智造, 可为当代校园环境提供安全、健康、恒久、靓丽的饰面生态解决方案。从教学楼、食堂、宿舍到图书馆、体育馆等, MCM 可量身订做, 满足当代校园多元化需求。

Safety and environmental protection are more important than architectural vision when used for construction or renovation of the school gates, multiple-function halls, libraries, school roads, athletics tracks, teaching buildings, canteens, supermarkets, bathrooms, dormitories, and schools.



瓷砖脱落的外墙

Exterior wall with tiles falling off

传统外墙瓷砖，自重大、易脱落，对师生人身及财产安全造成潜在威胁。

The traditional tiles, heavy, easy to fall off. Will be a potential threat to the personal and property safety of teachers and students.

安全的MCM外墙

Safe exterior wall with MCM Products

确保安全 呵护师生

Safety Protection

MCM 材料，轻、薄、柔，自重轻，仅为瓷砖的 1/6。

透气性优异，配套专业粘结剂，粘结强度大，安全牢固。

The MCM products, light, thin, flexible, breathable, the weight is just 1/6 of the traditional tile. Breathable, installing with the professional adhesive, large bond strength, safe and secure.



释放VOCs的涂料真石漆外墙

Exterior wall with printing and stone-like coatings release VOCs

涂料真石漆—VOCs的载体

Painting materials—VOCs' s carrier

学校内外墙，通常用涂料粉刷；因惯性思维，没有认识到涂料中，含有 VOCs。VOCs 在室外太阳和热的作用下能参与氧化氮反应并形成臭氧，并挥发卤代烃、苯胺类等有害物质，这类物质是大气中形成细颗粒物（PM2.5）和臭氧的重要前提物质，导致空气质量变差并且是夏季烟雾主要组分，对环境空气质量造成很大影响。

The interior and exterior wall of the schools, usually paint with painting materials. Due to inertia thinking habits, people do not realize that there is Strong carcinogen VOCs in painting materials. It will volatilize harmful substances like halogenated hydrocarbon and anilines in the membranzation process. It also forms important precursor substances such as fine particles(PM2.5) and Ozone while emits into the atmosphere. In this case, it will has a great impact on the air quality of the environment



健康生态的MCM外墙

Healthy and ecological exterior wall with MCM products

健康生态 营造舒适校园

Healthy and ecological,
To create a comfortable campus

MCM 材料属于无机成分，无毒无味、无任何有害物质释放。

The MCM products come from the inorganic material, Non-toxic and tasteless, do not release any harmful substances.

户外耐久 与建筑同寿命

Very Durable
Lifetime as long as the building itself

MCM 材料表里如一，通体一致；
加速耐老化测试达 3500h，相当户外使用 50 年；
抗冻融循环测试 100 次，无粉化无龟裂；

The MCM products are the full body products, appearance and the inside is the same material; Accelerated aging test reach 3500h, equivalent to 50 years; Anti-freeze-thaw cycle test 100 times, no pulverization, no cracking.

VS

持久的MCM外墙

The durable exterior wall with MCM products.

MCM户外耐久，历久弥新。

MCM products have an excellent outdoor durability, last for a long time.

斑驳的涂料外墙

The mottled exterior wall with printing

涂料真石漆等，一般2-5年后易出现褪色、起皮、龟裂，影响建筑外观视觉。

若每隔2-5年翻新一次，会直接增加后期施工及保养成本。

Using printing and stone-like coatings, within 2-5 years will be fading, peeling, cracking, affect the visual appearance of the building. If do the refurbishment every 2-5 years, will directly increase the post-construction and maintenance costs.

对比项 Compare item	类别 Category	高端质感涂料 High-end texture painting materials	真石漆 Landscape	常用涂料 Common painting materials	MCM片材 MCM sheets
国家标准要求 (加速耐老化测试数据) National standard requirements (Accelerated aging test data)		800h 800h	300h 300h	250h 250h	≥3500h, 超过国家标准的2000h over than the national standard 2000h
相当于户外使用 Equivalent to outdoor usage		5-8年 5-8 years	3-5年 3-5 years	2-3年 2-3 years	≥50年 ≥50 years
质量问题表现 Quality performance issues		超过年限会粉化、发粘、起皮、空鼓 Will be pulverized, sticky, peeling, hollowing over time			属于无机成分，与建筑同寿命 Belongs to the inorganic components, has long durability
实际施工现场问题 Site construction issues		掺假、加水稀释来使用，是涂料施工过程管控的难点和痛点。 It is very difficult in the control of painting materials construction process, in which there is the use of adulteration or dilution with water.			防止以劣充好 Prevent fake and inferior brand

MCM具有人文气息 满足多元化校园需求

The MCM has the humanities spirit.
Meet the demand of diverse campus.

Infiniti Stone

Original Wood Rhine

Stone wall



R-Series Facing Brick



G-Series Facing Brick



MCM 具有石材、砖类、木类、皮类等各种肌理效果，并且可根据当地历史文化特色定制 MCM 产品，满足各类学校特色建筑多元化需求。

The MCM has various of skin texture effect such as the stone, the brick, the wood and the leather, also can be customized on the basis of the local historical and cultural characteristics, to meet the various demands of various characteristics of the school building.

尤其适合学校旧改、翻新

工期快 成本低 低污染

Especially suitable for schools to do some renewal, or renovation.

Fast construction period Low cost Extraordinary effect



施工便捷
Easy to install



无需敲掉旧基层
Don't need to knock off the old base.



任何基层直接粘贴
Can be stickered on many bases.



无需带电操作
Construction without using electric energy.



不扰师生 避免噪音
Do not disturb teachers and students, Avoid noise.



避免粉尘污染
To avoid dust pollution



减少建筑垃圾
Reduce construction waste

MCM adhesive layer
MCM 粘结剂

MCM interfacial layer
MCM 界面剂

Old mosaic base
旧基层

MCM生态新饰面 筑造中国好校园

The MCM Low-Carbon new industries. Create a new world of campus buildings.

孩子是祖国的未来，他们每天 1/3 的时间在校园度过；呵护他们的安全、关爱他们的健康，是每个企业和个人义不容辞的责任。

Kids are the future of our country, they spend 1/3 of time in school everyday; To protect their safety, to care about their health, is the obligatory responsibility of every enterprise and person.



福美资质与荣誉 ENTERPRISE HONOR

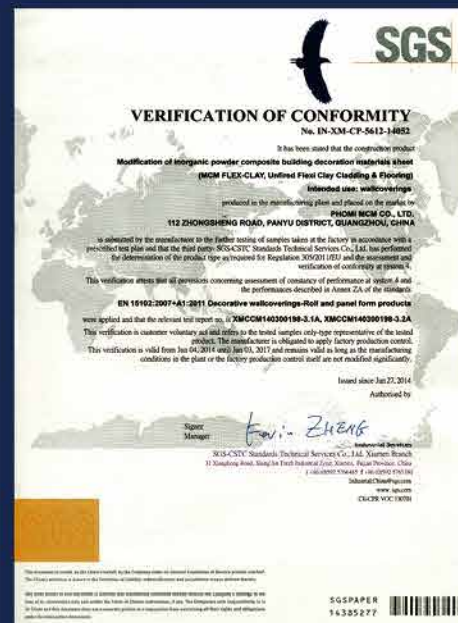
THE BEST INNOVATIVE ENTERPRISE OF THE YEAR,
THE SUSTAINABLE DEVELOPMENT OF ECOLOGICAL INDUSTRY
年度最佳创新企业 可持续发展生态产业



美国发明专利证书 United States Patent



欧盟专利发明证书 European Patent



欧盟CE认证证书 The European Certificate



新加坡绿色认证证书 Green Label SINGAPORE



2013第112届巴黎世界发明博览会获奖证书（爱迪生发明电灯在此第1届获金奖）



中国国际发明博览会获奖证书
Awarded for 7th International Exhibition Inventions



国家高新技术企业证书 Chinese National High Tech Enterprise certificate



国家火炬计划项目证书
Chinese the Focus of National Torch Plan Project



PART A SYSTEM SOLUTIONS
MCM校园生态饰面解决方案



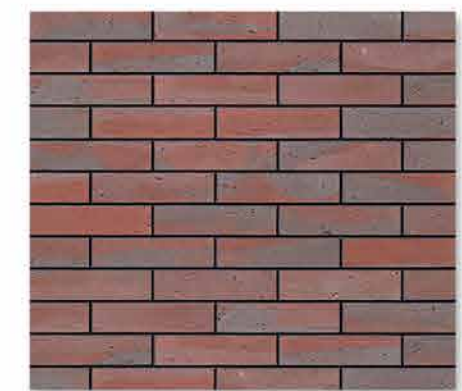
NO.1 学校大门入口 School Gate

使用PHOMI MCM材料 毛面花岗岩+密变砖

Using Phomi MCM products
MCM Granite+MCM Facing Brick



型号: MCM毛面花岗岩052
Model: MCM Granite 052
Size: 600X310mm



型号: MCM G面组合308317
Model: MCM G-Fambe Brick 308317
Size: 230x58mm



NO.2

教学楼主楼

Main Building

使用PHOMI MCM材料 R面劈开砖

Using Phomi MCM products MCM R-Fambe Brick



型号: MCM密变砖R面 085089

Model: MCM R-Fambe Brick 085089

Size: 222X63mm



教学楼外景

The Exterior of the Teaching Building

使用PHOMI MCM材料 洞石+板岩

Using Phomi MCM products MCM Travertine+MCM Slate



型号: MCM洞石 031Y

Model: MCM Travertine+MCM Slate

Size: 600x300mm

型号: MCM黛烟石

Model: MCM Slate Arte

Size: 1150X575mm



生态新饰面

MCM ECOLOGICAL MATERIALS
SOLUTION

MCM生态新饰面
筑造中国好校园

NO.3

教学主楼通道内景

The Passageway Interior of the Main Building

墙面 Wall cladding

使用PHOMI MCM材料 **K面劈开砖**

Using Phomi MCM products MCM K-Series Facing Brick



型号: MCM K面组合326C4
Model: MCM K-Series Facing Brick 326C4
Size: 225X60mm

地面 Floor

使用PHOMI MCM材料 **板岩**

Using Phomi MCM products MCM Slate



型号: MCM板岩 031
Model: MCM Slate 031
Size: 1150X575mm

使用PHOMI MCM材料 **水墨画石**

Using Phomi MCM products MCM Ink Painting Stone



Model 型号: MCM水墨画石
Model: MCM Ink Painting Stone
Size: 1150X575mm

使用PHOMI MCM材料 **红豆杉**

Using Phomi MCM products MCM Original Wood Rhine



型号: 红豆杉
Model: MCM Original Wood Rhine
Size: 900X180mm

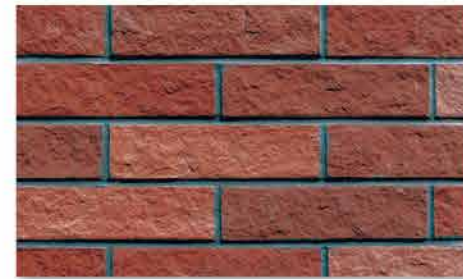
NO.4

教学主楼外景

The Exterior of the Teaching Building

使用PHOMI MCM材料 **K面劈开砖**

Using Phomi MCM products MCM K-Series Facing Brick



型号: MCM K面组合326C4

Model: MCM K-Series Facing Brick 326C4

Size: 225X60mm

使用PHOMI MCM材料 **铁力木**

Using Phomi MCM products MCM Original Wood Nile



型号: MCM 铁力木

Model: MCM Original Wood Nile

Size: 900X180mm



MCM ECOLOGICAL MATERIALS
SOLUTION

**MCM生态新饰面
筑造中国好校园**

NO.5

教学主楼外景

The Exterior of the Teaching Building

使用PHOMI MCM材料 **R面密变砖**

Using Phomi MCM products MCM R-Series Facing Brick



型号: MCM密变砖R面 085089

Model: MCM R-Series Facing Brick 085089

Size: 222x63mm





NO.6

教学楼外景

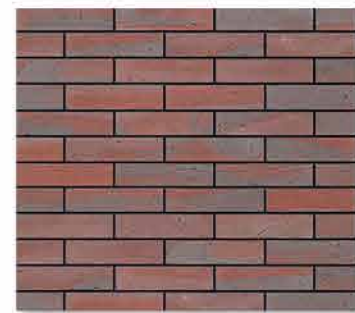
The Exterior of the Teaching Building

使用PHOMI MCM材料 G面窑变砖

Using Phomi MCM products MCM G-Series Facing Brick



型号: MCM窑变砖 G面030038组合
Model: MCM G-Series Facing Brick 030038



型号: MCM窑变砖 G面308317组合
Model: MCM G-Series Facing Brick 308317

NO.7

教学主楼

The Exterior of the Main Building

使用PHOMI MCM材料 G面窑变砖

Using Phomi MCM products
MCM G-Series Facing Brick

规格 Size: 230x58mm



型号: MCM窑变砖 G面030038组合
Model: MCM G-Series
Facing Brick 030038



型号: MCM窑变砖 G面308317组合
Model: MCM G-Series
Facing Brick 308317





NO.8

课室地面

Floor of the Classroom

使用PHOMI MCM材料 金光青石

Using Phomi MCM products
MCM Golden Lolite



型号: MCM金光青石 Model: MCM Golden Lolite
Size: 1150x575mm

NO.9

室外地面

Floor of outdoor area

使用PHOMI MCM材料
板岩+鳄鱼皮+橙黄木

Using Phomi MCM products
MCM Slate Arte+MCM Croco Leather
+MCM Jagged Wood Alps



型号: MCM黛烟石 Model: MCM Slate Arte
Size: 1150X575mm



型号: MCM鳄鱼皮361 Model: MCM Croco 361
Size: 1500x600mm



型号: MCM檀黄木
Model: MCM Jagged Wood Alps
Size: 900X180mm



NO.10

图书馆外景

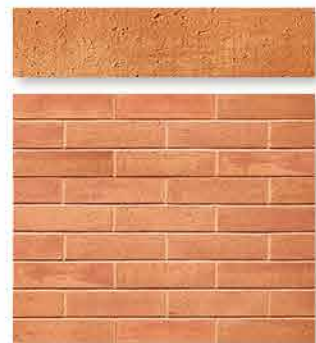
The exterior of the Library

使用PHOMI MCM材料 **35连体条石+A面密变砖**

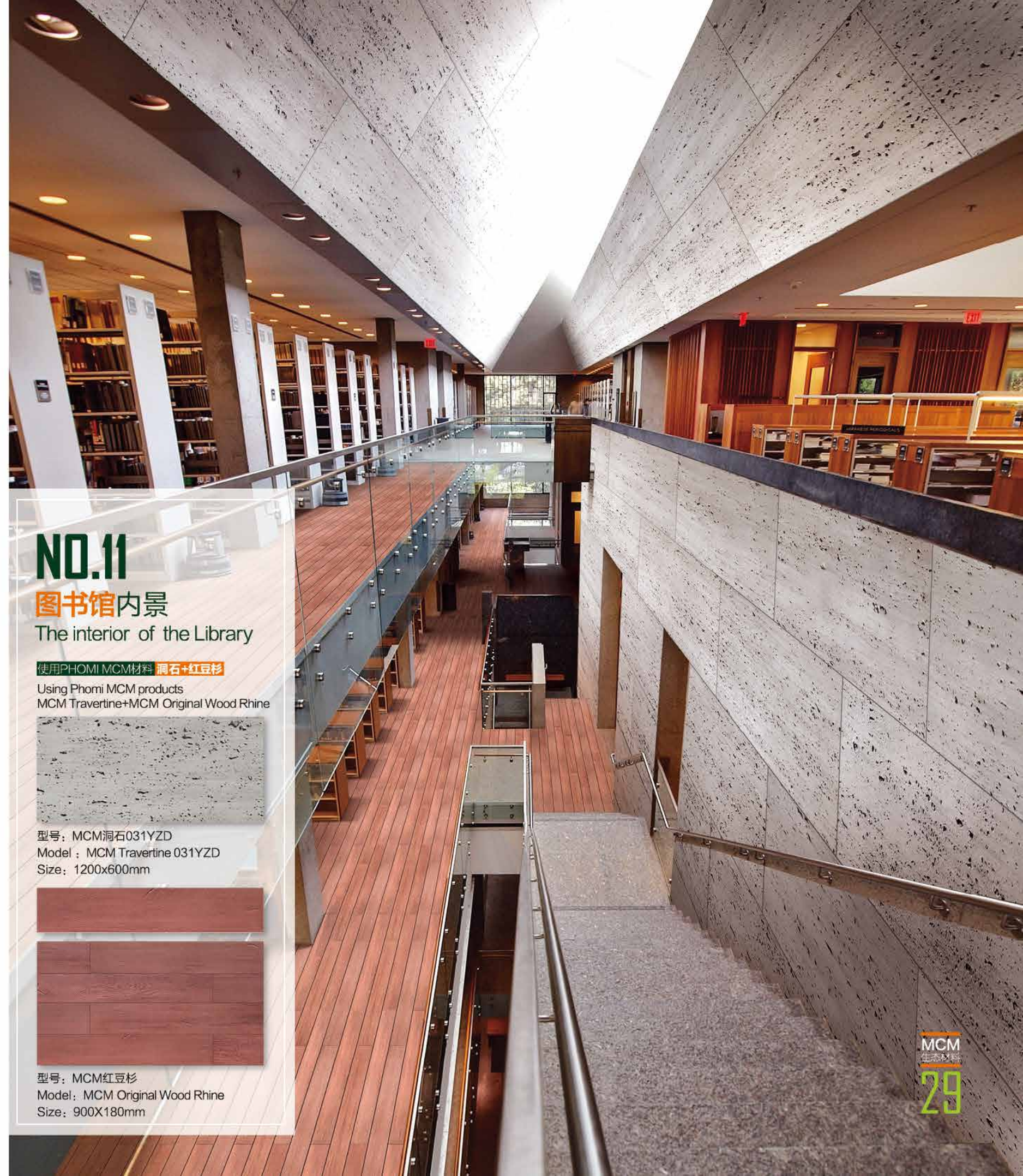
Using Phomi MCM products
MCM 35 Piece Stack Stone + A-Fambe Brick



型号: 35连体条石 043
Model: 35 Piece Stack Stone 043
规格 Size: 595X280mm



型号: MCM密变砖A面 085089
Model: A-Fambe Brick 085089
Size 规格: 240x60mm



NO.11

图书馆内景

The interior of the Library

使用PHOMI MCM材料 **洞石+红豆杉**

Using Phomi MCM products
MCM Travertine+MCM Original Wood Rhine



型号: MCM洞石031YZD
Model: MCM Travertine 031YZD
Size: 1200x600mm



型号: MCM红豆杉
Model: MCM Original Wood Rhine
Size: 900X180mm



NO.12

体育馆外景
Exterior wall of Gymnasium

使用PHOMI MCM材料 毛面花岗岩
Using Phomi MCM products
MCM Granite



型号: MCM毛面花岗岩052
Model: MCM Granite 052
Size: 600X310mm



NO.13

体育馆内景
Interior wall of Gymnasium

使用PHOMI MCM材料 壁岩

Using Phomi MCM products
MCM Oasis Stone



型号: MCM烟山石
Model: MCM Oasis Stone Winde
Size: 900X600mm



NO.14

多功能厅外景

The exterior of the multi function hall

使用PHOMI MCM材料
分婣石+烟山石+铁力木

Using Phomi MCM products
MCM Oasis Stone Raine+
MCM Oasis Stone Winde+
MCM Original Wood Nile



型号: MCM分婣石
Model: Oasis Stone Raine
Size: 900X600mm / 600X300mm



型号: MCM烟山石
Model: Oasis Stone Winde
规格: 900X600mm / 600X300mm



型号: MCM铁力木
Mode: Original Wood Nile
Size: 900X180mm

NO.15

多功能厅内景

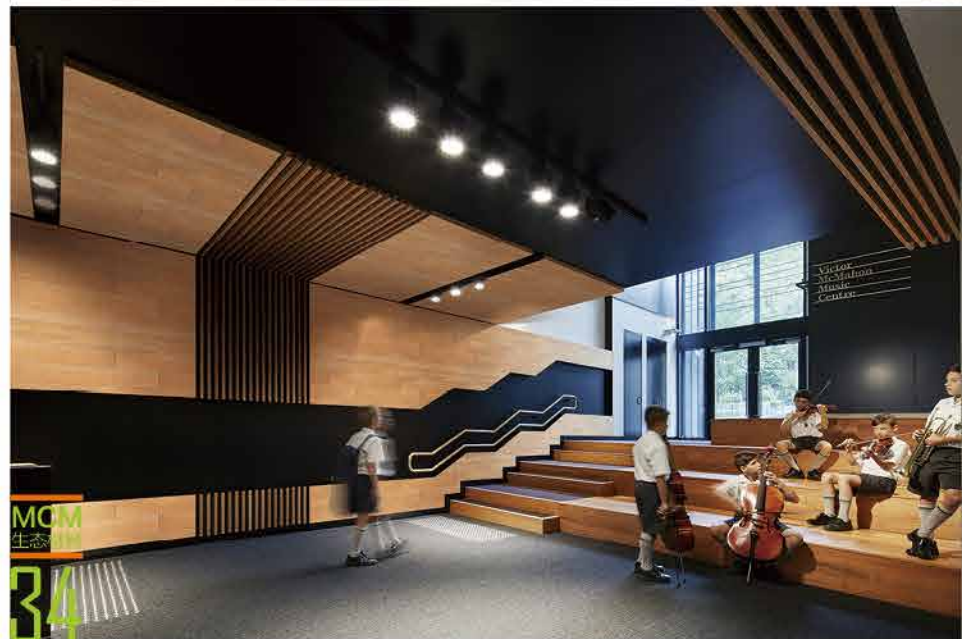
The Interior of the multi function hall

使用PHOMI MCM材料 榫黄木

Using Phomi MCM products
MCM Jagged Wood Alps



型号: MCM榫黄木
Model: MCM Jagged Wood Alps
Size: 900X180mm



多功能厅内景

The Interior of the multi function hall

天花 Ceiling

使用PHOMI MCM材料 洞石

Using Phomi MCM products
MCM Travertine



型号: MCM洞石 052
Model: MCM Travertine 052
Size: 1200x600mm



天花/地面 Ceiling/Floor

使用PHOMI MCM材料 榫黄木

Using Phomi MCM products
MCM Jagged Wood Alps



型号: MCM榫黄木
Mode: MCM Jagged Wood Alps
Size: 900X180mm





NO.16

食堂外景(局部)

The exterior of the canteen

外墙面 Outer Wall cladding

使用PHOMI MCM材料 红豆杉

Using Phomi MCM products
MCM Original Wood Rhine



型号: MCM红豆杉
Model: MCM Original Wood Rhine
Size: 900X180mm

食堂外景

The exterior of the canteen

外墙面 Outer Wall cladding

使用PHOMI MCM材料 红豆杉

Using Phomi MCM products
MCM Original Wood Rhine



型号: MCM红豆杉
Model: MCM Original Wood Rhine
Size: 900X180mm

食堂内景

The Interior of the canteen

地面/墙面 Floor / Wall cladding

使用PHOMI MCM材料 檀黄木+金光青石

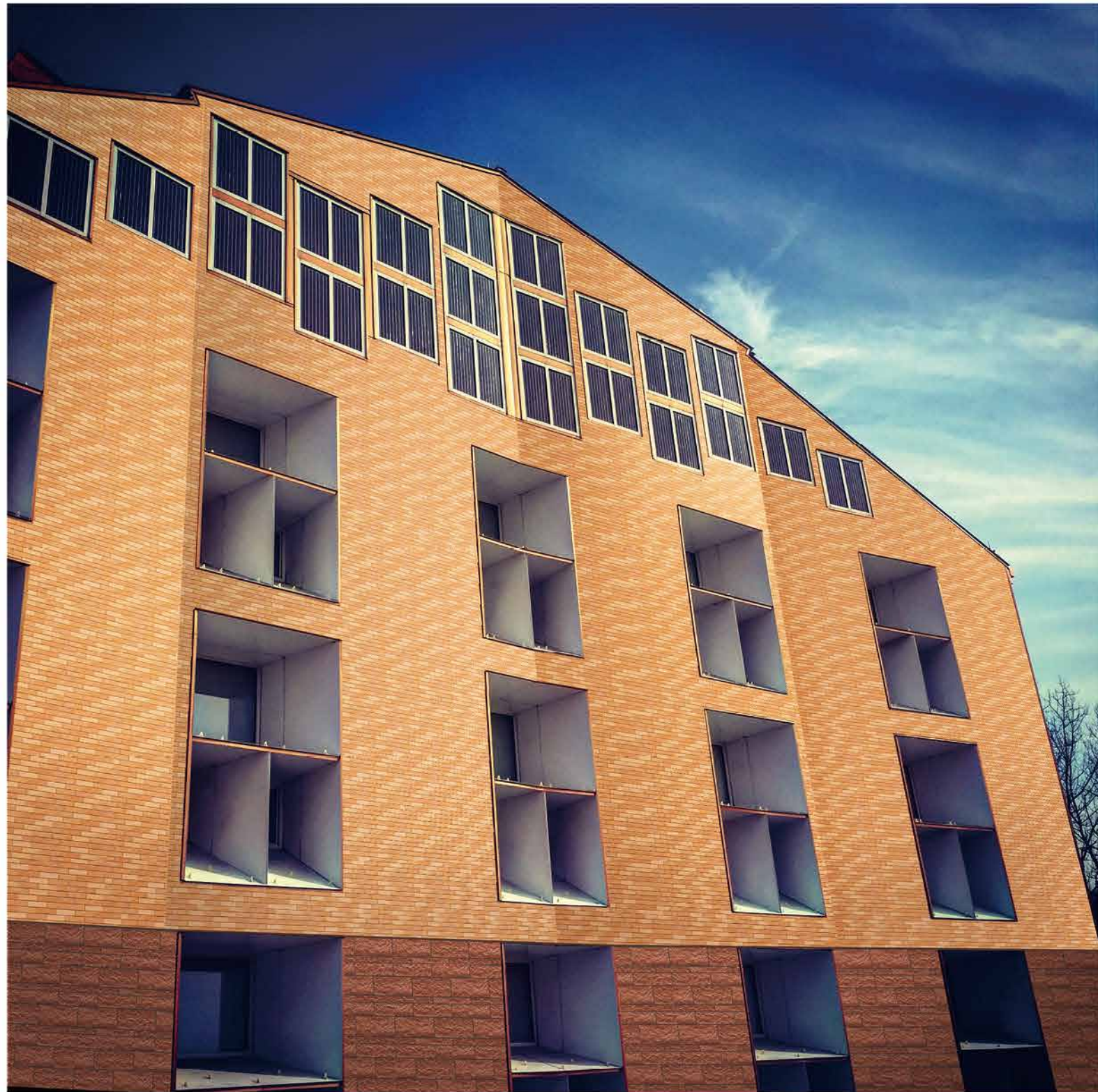


型号: MCM檀黄木
Mode: MCM Jagged Wood Alps
Size: 900X180mm



型号: MCM金光青石
Model: MCM Golden Lolite
Size: 1150x575mm





NO.17

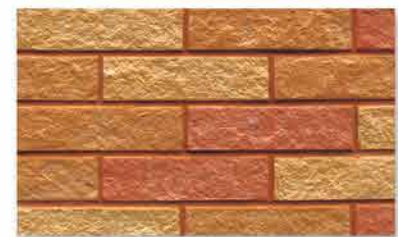
宿舍外景 The exterior of the dormitory

使用PHOMI MCM材料
劈开砖+毛面花岗岩

Using Phomi MCM products
MCM Granite+
MCM K-Serie Facing Brick



型号：MCM毛面花岗岩 367
Model : MCM Granite 367
Size: 600X310mm



型号：MCM K面劈开砖087C4
Model 型号：MCM K-Serie Facing Brick
Size: 225x60mm

NO.18

超市内外景 School supermarket

外墙面 Outer Wall cladding

使用PHOMI MCM材料 楠木

Using Phomi MCM products
MCM Original Wood Volga



型号：MCM楠木
Model : MCM Original Wood Volga
Size: 900X180mm

内墙面 Interior Wall cladding

使用PHOMI MCM材料 象皮

Using Phomi MCM products
MCM Elephantiasi



型号：MCM象皮
Model: MCM Elephantiasi
Size: 1500x600mm



地板/内墙面 Floor / Interior Wall cladding

使用PHOMI MCM材料 金光青石+檀黄木

Using Phomi MCM products
MCM Jagged Wood Alps+
MCM Golden Lolite



型号：MCM金光青石
Model : MCM Golden Lolite
Size: 1150x575mm



型号：MCM檀黄木
Mode: MCM Jagged Wood Alps
Size: 900X180mm





NO.19

浴室外墙

The exterior of the Bathroom

墙面 Wall cladding

使用PHOMI MCM材料 南岛岁月痕

Using Phomi MCM products MCM Infiniti Stone



型号: MCM南岛岁月痕 038
Model: MCM Infiniti Stone 038
Size: 590x300mm

地面 Floor

使用PHOMI MCM材料 MCM改性土

Using Phomi MCM products MCM The floor of Modified Clay



型号: MCM改性土浇制地面
Model: MCM The floor of Modified Clay

浴室外墙

The exterior of the Bathroom

外墙面 Outer Wall cladding

使用PHOMI MCM材料 南岛岁月痕

Using Phomi MCM products MCM Infiniti Stone



型号: MCM南岛岁月痕 038
Model: MCM Infiniti Stone 038
Size: 590x300mm

卫生间墙面

The Interior of the Toilet

内墙面 Interior Wall cladding

使用PHOMI MCM材料 砂岩

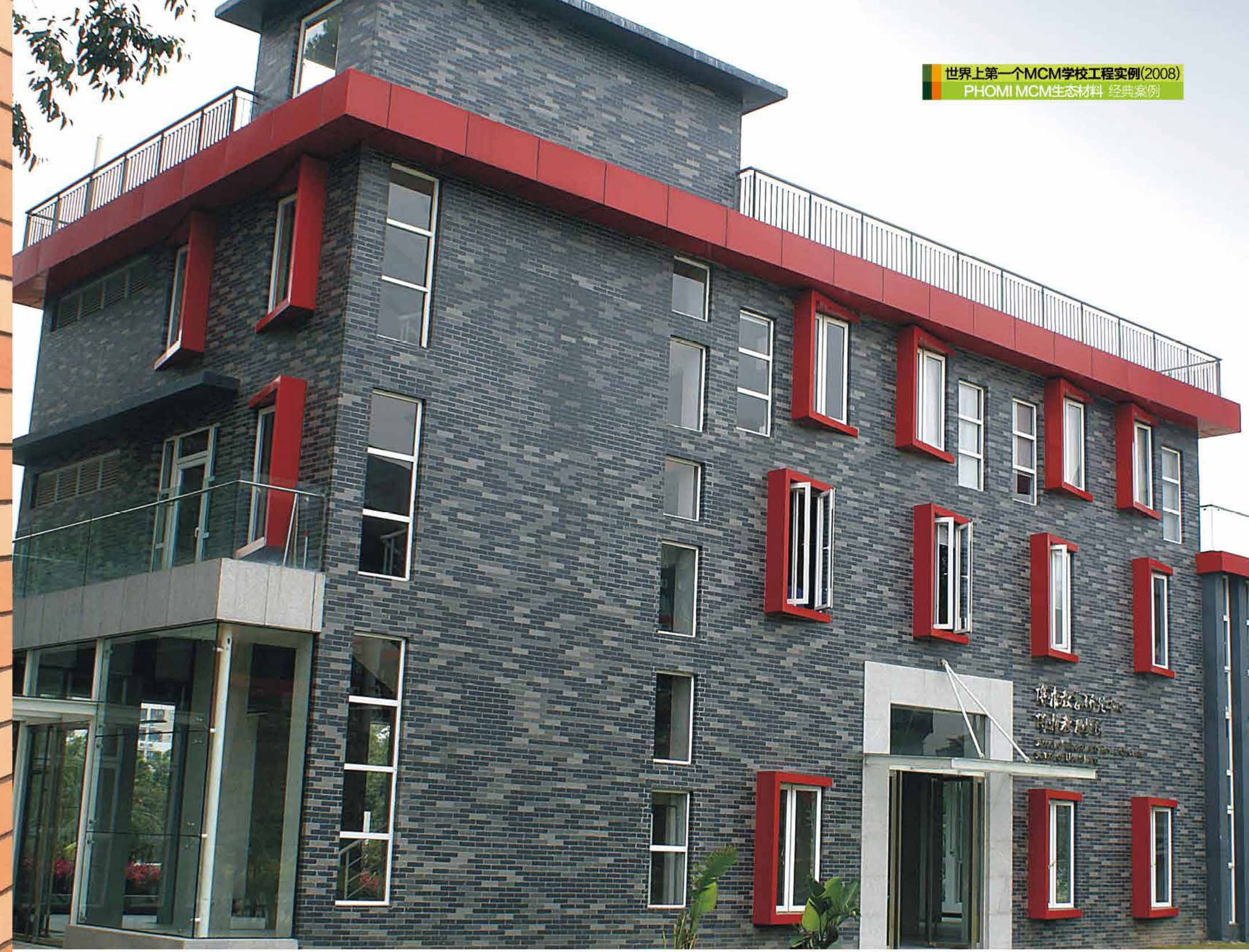
Using Phomi MCM products MCM Sandstone

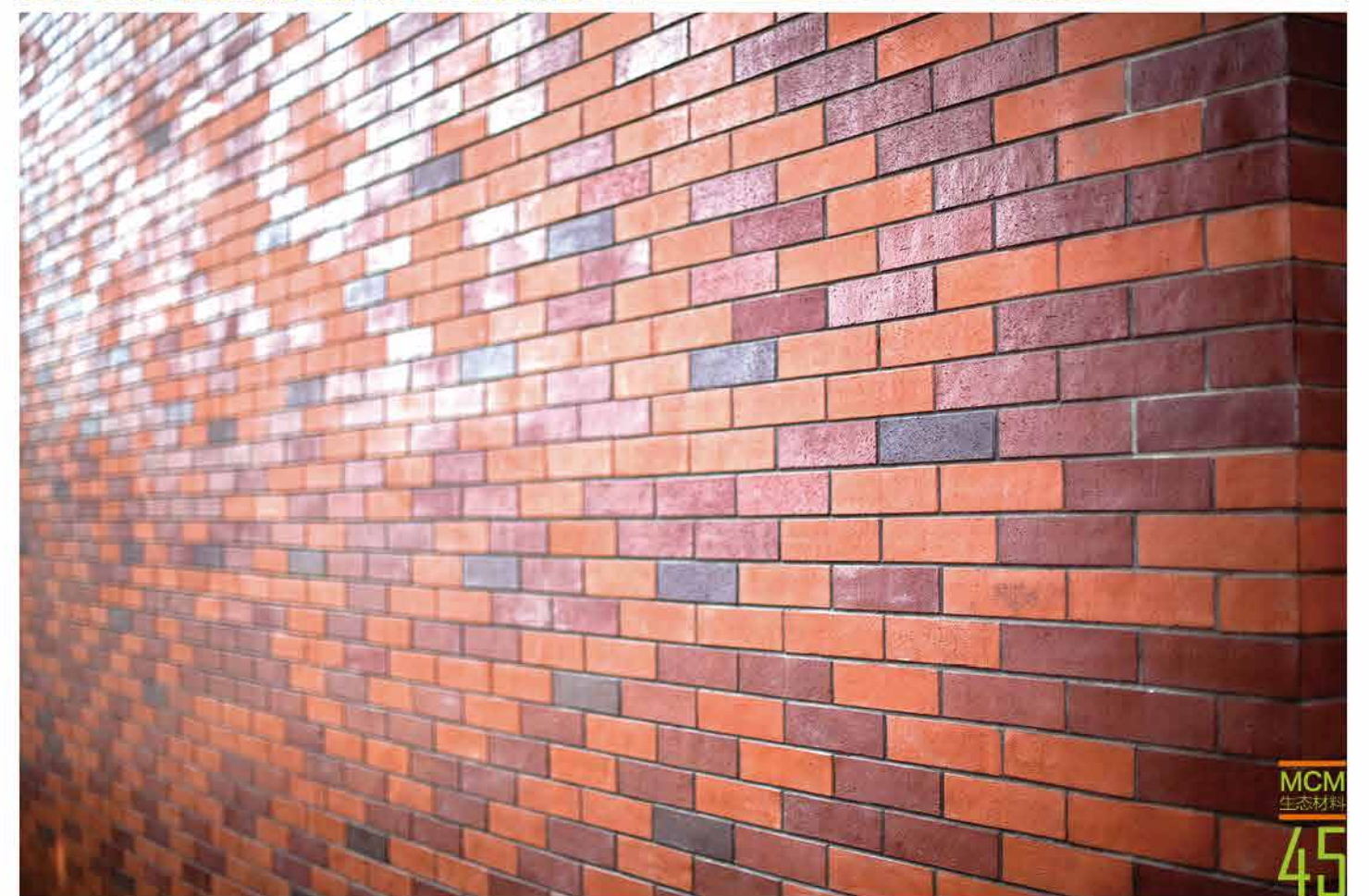
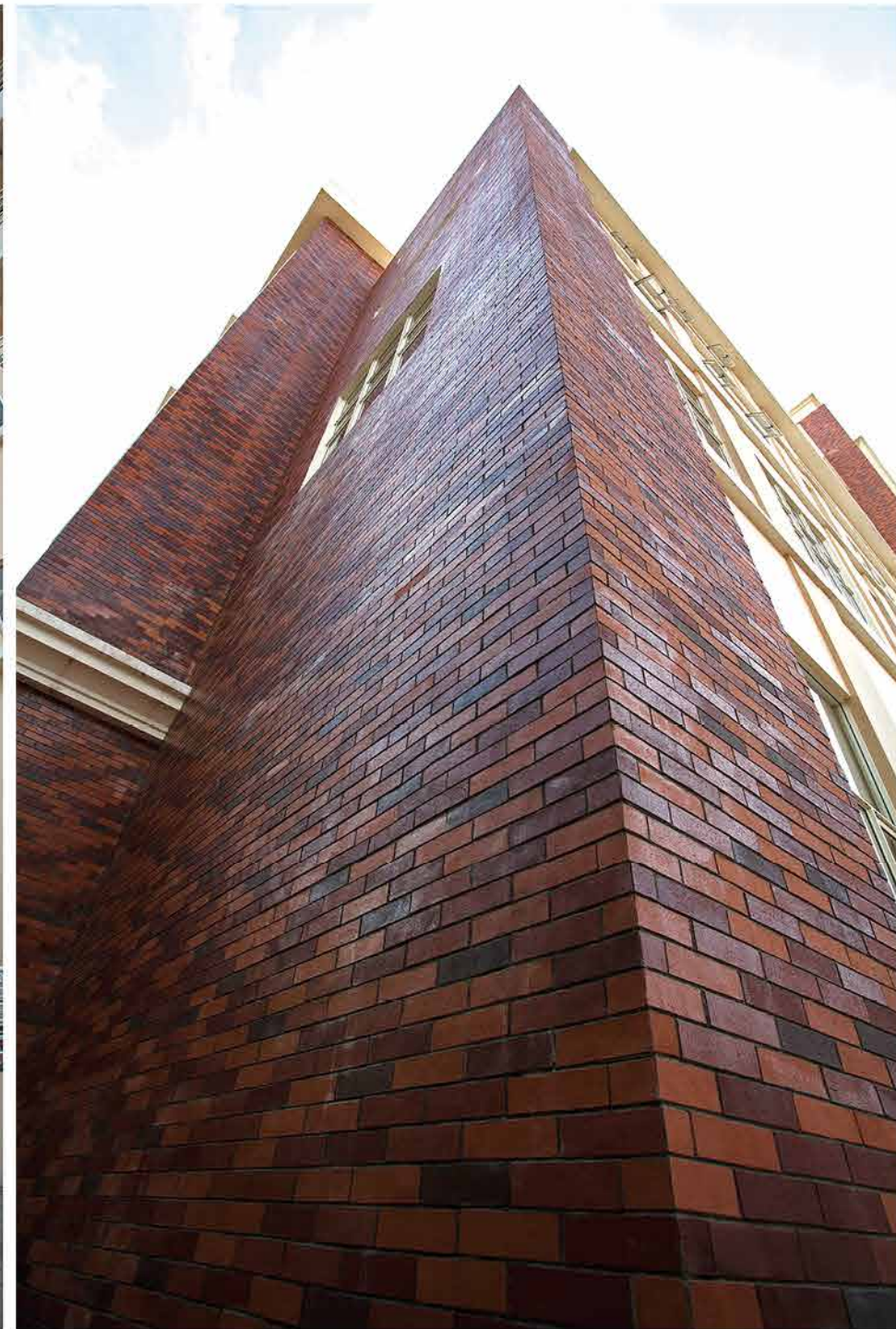


型号: MCM墨绕石
Model: MCM Sandstone Vision
Size: 1200X600mm / 600x300mm



PART B School Project Highlights
PHOMI MCM生态材料-校园工程集锦





PROJECT EXAMPLE 校园工程集锦 02
PHOMI MCM生态材料
东南亚区 项目名称: 印度尼西亚八华小学

世界上规模最大的MCM工程实例(30万㎡)
PHOMI MCM生态材料 经典案例



PROJECT EXAMPLE 校园工程集锦 03
PHOMI MCM生态材料

西南区

项目名称: 贵阳市幼儿师范高等专科学校
(一期<已建>、二期<报建中>)
项目地址: 贵州省贵阳市清镇市职教城东区





PROJECT EXAMPLE
PHOMI MCM生态材料 校园工程集锦 04-1

西南区 项目名称：贵州省交通职业技术学院(新校区)
项目地址：贵州省贵阳市云岩区白云大道245号



PROJECT EXAMPLE
PHOMI MCM生态材料 校园工程集锦 04-2

西南区 项目名称：贵州省交通职业技术学院(老校区)



PROJECT EXAMPLE 校园工程集锦 05
PHOMI MCM生态材料

西南区 项目名称：贵州省贵阳市三桥小学
项目地址：贵阳云岩区中坝路3号

MCM
生态材料
50



PROJECT EXAMPLE 校园工程集锦 06
PHOMI MCM生态材料

西南区 项目名称：贵州省政府机关幼儿园
项目地址：贵阳市云岩区安云路18号

MCM
生态材料
51



PROJECT EXAMPLE
PHOMI MCM生态材料

校园工程集锦 07

西南区 项目名称：遵义第二十中学
项目地址：遵义市红花岗区长征镇凉水村



PROJECT EXAMPLE
PHOMI MCM生态材料 校园工程集锦 08

西南区 项目名称：遵义二十中附属小学
项目地址：遵义市红花岗区长征镇凉水村



PROJECT EXAMPLE
PHOMI MCM生态材料 校园工程集锦 09

西南区 项目名称：遵义汇川一小
项目地址：贵州省遵义市汇川区沈阳路



PROJECT EXAMPLE
PHOMI MCM生态材料 校园工程集锦 10

西南区 项目名称：遵义官井学校
项目地址：遵义市红花岗区官井路146号



PROJECT EXAMPLE
PHOMI MCM生态材料
校园工程集锦 11
西南区
项目名称：遵义市政府机关幼儿园
项目地址：遵义杨柳街24号



PROJECT EXAMPLE
PHOMI MCM 生态材料
校园工程集锦 12

西南区
项目名称：遵义五中
项目地址：遵义市汇川区澳门路中段



PROJECT EXAMPLE
PHOMI MCM 生态材料
校园工程集锦 13

西南区
项目名称：遵义师范学院
项目地址：遵义市上海路830号



MCM
生态材料
59

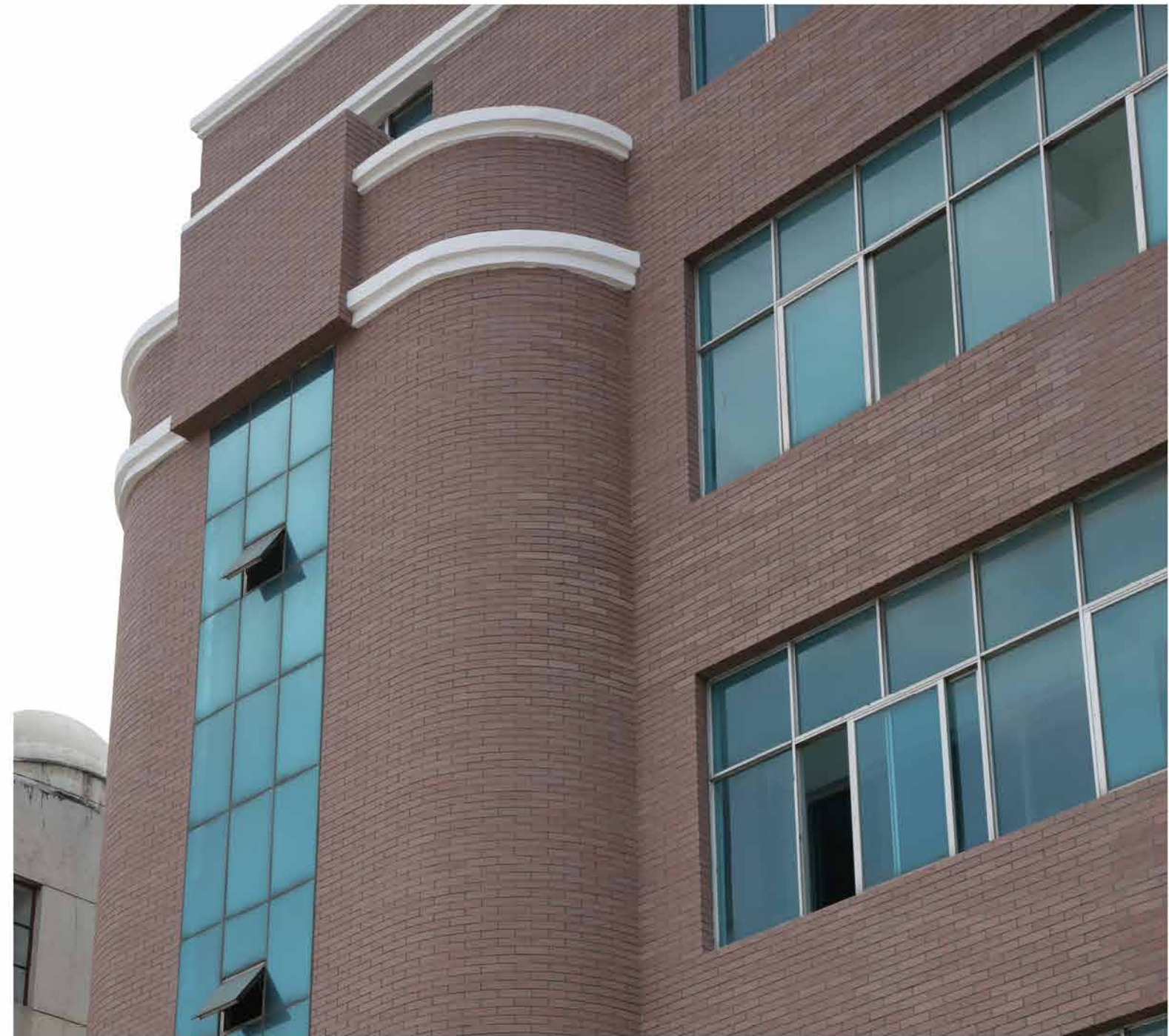


PROJECT EXAMPLE 校园工程集锦 14
PHOMI MCM 生态材料

西南区 项目名称：遵义汇川第十小学
项目地址：遵义市汇川大道

PROJECT EXAMPLE 校园工程集锦 15
PHOMI MCM 生态材料

西南区 项目名称：昭通市大关高级中学
项目地址：关县翠华镇文化街壹号




PROJECT EXAMPLE
 PHOMI MCM生态材料 校园工程集锦 16

西南区 项目名称: 曲靖市沾益县花山中学
 项目地址: 云南省曲靖市沾益县花山镇兴源社区





广西桂林市飞凤小学改造后



广西桂林市飞凤小学改造前



PROJECT EXAMPLE 校园工程集锦 17
PHOMI MCM生态材料

西南区 项目名称: 广西桂林市飞凤小学
项目地址: 桂林甲山路123号

TIPS

MCM应用于学校建筑翻新优势:

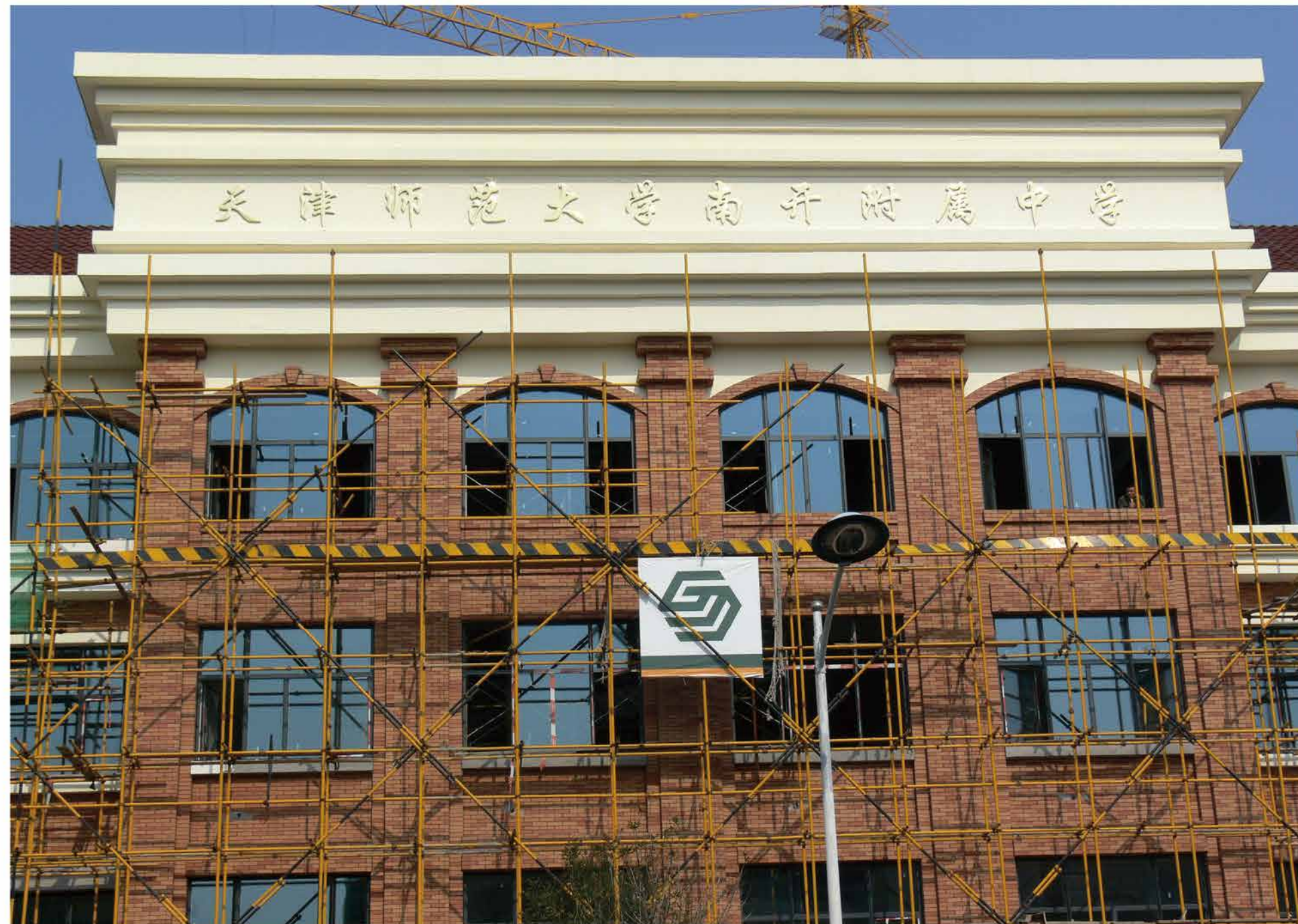
- 1、工期快、成本低, 效果非凡;
- 2、无需敲掉旧基层, 可直接粘贴, 施工现场无噪音, 无固体垃圾;
- 3、可量身订制符合当地风俗的产品;



PROJECT EXAMPLE 校园工程集锦 18
PHOMI MCM生态材料

西南区

项目名称: 广西柳州高级中学
项目地址: 广西柳州市桂中大道高新五路西



PROJECT EXAMPLE 校园工程集锦 19
PHOMI MCM生态材料

华北区

项目名称: 天津师范大学南开附属中学
项目地址: 天津市南开区黄河道458号



PROJECT EXAMPLE 校园工程集锦 20
PHOMI MCM生态材料

华北区 项目名称: 天津市南开区中心小学
项目地址: 天津市南开区兴南街道四马路延生里



PROJECT EXAMPLE 校园工程集锦 21
PHOMI MCM生态材料

华东区 项目名称: 福建省福州第十八中学
项目地址: 福州市新城路



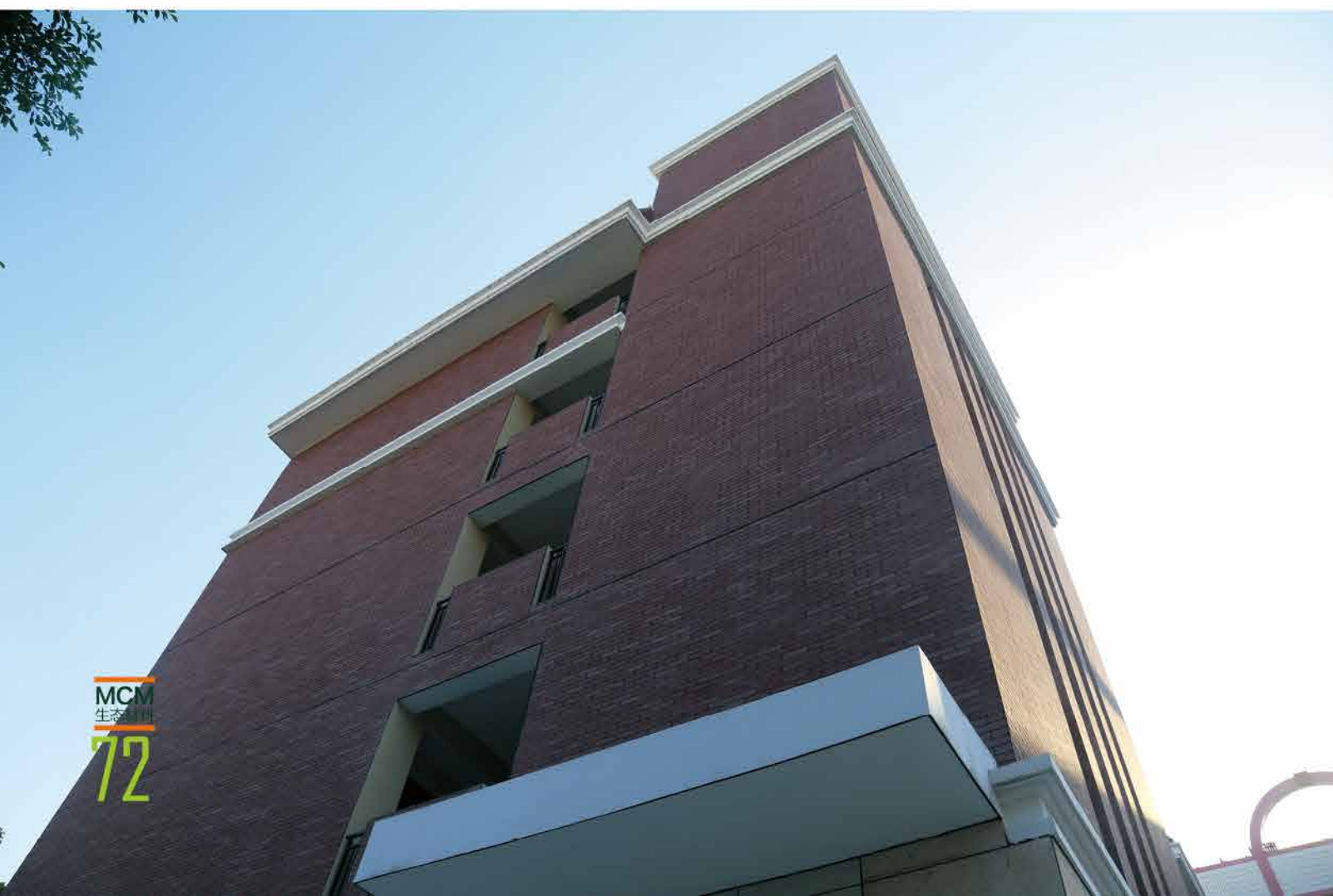
华东区

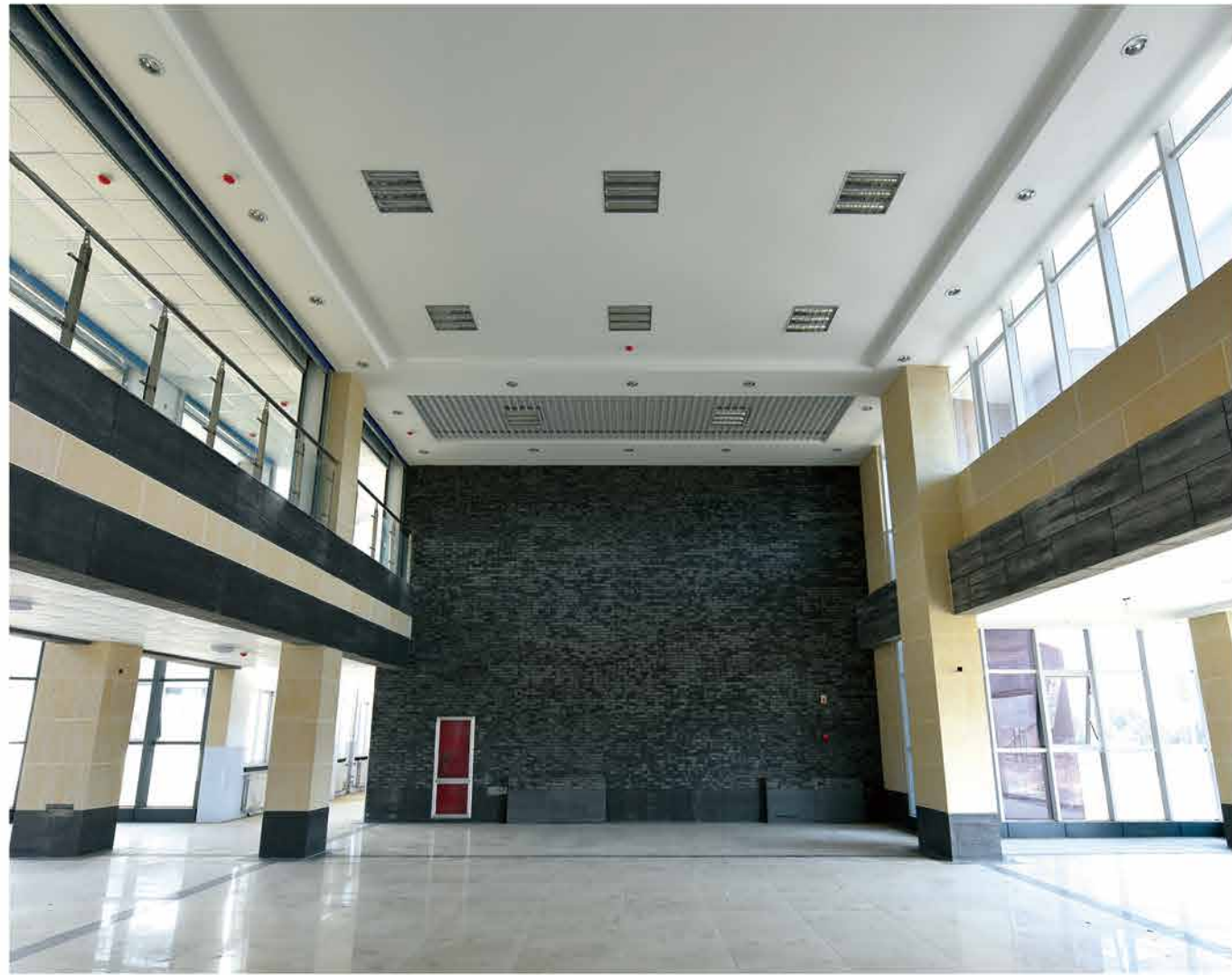
项目名称：福建省福州第十二中学
项目地址：福州市仓山区朝阳路171号



华东区

项目名称：福建省福州市洪塘中心小学
项目地址：福州市仓山区辖区建新乡洪塘状元街6号





PROJECT EXAMPLE 校园工程集锦 22
PHOMI MCM生态材料

华东区 项目名称: 山东省泰安第一中学
项目地址: 泰安市泰山区青年路117号



MCM 生态材料 74



PROJECT EXAMPLE 校园工程集锦 23
PHOMI MCM生态材料

华东区 项目名称: 义乌市宗泽小学
项目地址: 浙江省义乌市稠城宗泽村



MCM 生态材料 75



PROJECT EXAMPLE
PHOMI MCM生态材料
校园工程集锦 24

华东区

项目名称: 浙江台州学院椒江校区图书馆
项目地址: 浙江省台州市椒江区市府大道1139号





PROJECT EXAMPLE 校园工程集锦 27
PHOMI MCM/2018/01

西北区

项目名称: 青海省西宁五一学校
项目地址: 西宁市一寨印625号




PROJECT EXAMPLE
 PHOMI MCM生态材料 **校园工程集锦 28**

东北区 项目名称：黑龙江省大庆幼儿园
 项目地址：大庆市幼教中心4区




PROJECT EXAMPLE
 PHOMI MCM生态材料 **校园工程集锦 29**

东北区 项目名称：黑龙江省大庆医专
 项目地址：黑龙江省大庆市卡尔加里路7号



企业介绍 Enterprise introduction

福美，MCM生态材料的发明者，国家MCM材料行业标准制定者，世界MCM行业的领导者，公司的理想是为全球提供更多环境友好型，利于社会可持续发展的产品。

福美，股份制上市企业，在中国获得了国家创新基金的支持，承担着国家火炬计划重点项目，拥有欧盟、美国及中国20余项发明专利，通过了国际ISO14001环境管理体系、ISO9001质量管理体系认证。所有产品通过了美国Green Guard 和新加坡Green Label（绿色产品）认证及欧洲CE认证。

福美目前在全球35个国家建立了分支机构，其中已在美国、捷克、马来西亚、韩国、印度建立了大型MCM材料体验中心。在中国100余座城市建立了销售网络，并已在75座城市建设了500平米以上的MCM材料运营中心。提供超过29个系列，300多个品种的MCM产品和建筑节能解决方案，产品品类亦应全球市场需求在持续增加。

福美视生态环境保护为己任。所有工厂，生产过程均无“三废”排放，实现了社会、企业、人、环境的和谐共存。

Phomi is the inventor of MCM ecological material, the constitutor of National MCM materials industry's standards and the MCM industry World leader. Our goal is to provide more environmental friendly and social sustainable development products to the world.

Phomi, a heading to stock listed company, gained the support of national innovation fund in China, bear the key project of national Torch Program, also obtains more than 20 invention patents in EU, the United States and China. PHOMI passed the ISO14001 environmental management system certification, and ISO9001 quality management system certification. All products have gained the Certificate of United States Guard Green, Singapore Green Label (green product) certification and European CE certification.

Phomi has currently more than 20 branches in different countries around the world, and built up large MCM material experiencing center in the United States, Czech Republic, Malaysia, South Korea and India. In China, We have established sales network in more than 100 cities, and has built over 500 square meters of MCM materials operation centers in 60 cities. We offer more than 29 series of MCM products with 300 varieties and energy saving solutions for buildings. The product category is increasing constantly due to global market demands' increasing.

Phomi commits to ecological environment protection. There is no "three wastes" emissions in the process of production in our factories. We create the harmonious coexistence with society, enterprise, human and environment.

选择福美的三大理由

Three reasons on why choose Phomi

强大的研发、产能、服务等优势，让您的选择不再艰难。
Advantages in strong R & D, production, and service, let your choice no longer difficult.



NO.1

研发实力
R & D Strength

最新、最全的MCM产品，总能第一时间在福美找到。作为MCM材料的发明者和行业标准的制定者，福美拥有领先于世界的研发创新能力。推陈出新，不断革新是我们的创新使命。

As the national MCM industry standards constitutor, Phomi has the world leading strength in MCM research and development. Our mission is to unceasingly introduce new products with technical innovation.



NO.2

产能优势
Production Advantage

世界上最完备、最领先的MCM自动化生产设备就在福美。无论是多大的工程量，或是什么品种和颜色，福美都不会让您失望。

Phomi has the most advanced and comprehensive MCM production lines. No matter what quantity, variety or color you choose, Phomi will never let you down.



NO.3

服务保障
Service Guarantee

不仅销售杰出的新产品，福美更看重为您提供系统的施工保障。从配套的粘结剂、到成熟的施工队伍，让产品从工厂到建筑，一路省心无忧。

Not only products, but also systematic guarantee with construction accessories, product training and construction guidance can be provided, Phomi lets you worry free all the time.

2016

MCM ECOLOGICAL MATERIALS SOLUTION

MCM生态新饰面 筑造中国好校园

MCM校园部分案例精选

MCM School projects highlights

以下案例排名不分先后

The following ranking in a random order

印度尼西亚雅加达八华小学
Indonesia Jakarta Bahua Primary School

广东广州岭南学院
Guangzhou Ling Nan college

黑龙江省大庆油田医专
Daqing Oilfield Medical College

黑龙江省大庆让胡路区龙南小区幼儿园
Daqing Longnan living area Kindergarten

黑龙江省大庆让胡路区怡园小区幼儿园
Daqing Yiyuan living area Kindergarten

陕西西安市杨陵区西北农林科技大学教研楼
Xi'an Northwest A&F University

陕西延安市延安中学改造
Xi'an Yan'an Middle School rebuild

青海西宁市五一小学
Xi'ning Wuyi Primary School

重庆九龙坡职教中心
Chongqing Jiulong Vocational Education Center

重庆市北碚区九龙山小学
Chongqing Jiulong Mountain Primary school

四川德阳建筑工程学院
Deyang Construction Engineering College

江苏省镇江市中山路小学
Zhenjiang Zhongshan Road Primary School

浙江省台州学院椒江校区教学楼
Taizhou College Jiaojiang Campus

浙江省台州学院椒江校区图书馆大楼
Taizhou College Jiaojiang Library

浙江省金华市义乌市宗泽小学
Yiwu ZongZe primary school

河北唐山市胥各庄小学
Tangshan Xuge Village Primary School

天津师范大学南开附属中学
Nankai high school affiliated to Tianjin Normal University

天津南开中心小学
Tianjin Nankai Center Primary School

山东省泰安第一中学
Tai'an No.1 Middle School

福建省厦门第二中学
Xiamen No.2 Middle School

福建省厦门第十二中学
Xiamen No.12 Middle School

福建省福州第十八中学
Fuzhou No.18 Middle School

福建省福州洪塘小学
Fuzhou Hongtang Primary School

福建省厦门大学附属中山医院
Xiamen University Subsidiary Zhongshan Hospital

贵州省铜仁市第十八小学
Tongren No.18 Primary School

贵州省六盘水市实验一小
Lupanshui No.1 Experimental Primary School

贵州省贵阳市幼儿师范高等专科学校
Guiyang Kindergarten Teachers College

贵州省交通职业技术学院
Guizhou traffic vocational and Technical Management College

贵州省商业高等专科学校
Guizhou Commercial College

贵州省黔南州都匀一中
Qiannan Duyun No.1 Middle School

贵州省铜仁市铜仁一中
Tongren No.1 Middle School

贵州省贵阳市花果山幼儿园
Guiyang Huaquoyuan Kindergarten

贵州省贵阳市省机关幼儿园
Guiyang Provincial Authorities Kindergarten

贵州省贵阳市三桥小学
Guiyang the Third Bridge Primary School

贵州省贵阳市改茶小学
Guiyang Gaicha Primary School

贵州省贵阳市23中
Guiyang No.23 Middle School

贵州省贵阳市24中
Guiyang No.24 Middle School

贵州省贵阳市30中
Guiyang No.30 Middle School

贵州省贵阳市城西小学
Guiyang Chengxi Primary School

贵州省贵阳市新东门小学
Guiyang Xindongmen Primary School

贵州省贵阳市实验三中
Guiyang Shiyuan No.3 Middle School

贵州省贵阳市东山小学
Guiyang Dongshan Primary School

贵州省遵义市医药高等专科学校
Zunyi Medical College

贵州省遵义市医学院
Zunyi Medical College

贵州省遵义师范学院
Zunyi Teachers College

贵州省遵义市五中
Zunyi No.5 Middle School

贵州省遵义市汇川区一小
Zunyi Huichuang District No.1 Primary School

贵州省遵义市汇川区二小
Zunyi Huichuang District No.2 Primary School

贵州省遵义市二十中
Zunyi No.20 Middle School

贵州省遵义市凉水井小学
Zunyi Liangshuijing Primary School

贵州省遵义市十二中
Zunyi No.12 Middle School

贵州省遵义市官井中小学
Zunyi Guanjing Primary School

云南省云南一中
Yunnan No.1 Middle School

云南省沾益花山中学
Zhanyi Huashan Middle School

云南昭通大关高级中学
Zhaotong Senior High School

广西南宁市五十四中
Nanning No.54 Middle School

广西桂林市飞凤小学
Guilin Feifeng Primary School

广西宾阳小学
Binyang Primary School

广西柳州高中
Liuzhou Senior High School

.....

PHOMI®

福美建材时装

PHOMI MCM
ECOLOGICAL MATERIALS



致力于为当代校园筑造

安全、健康、恒久、靓丽的环境

www.phomi.com

以上为广东福美集团股份有限公司部分工程案例，统计截止时间为2016年10月31日。